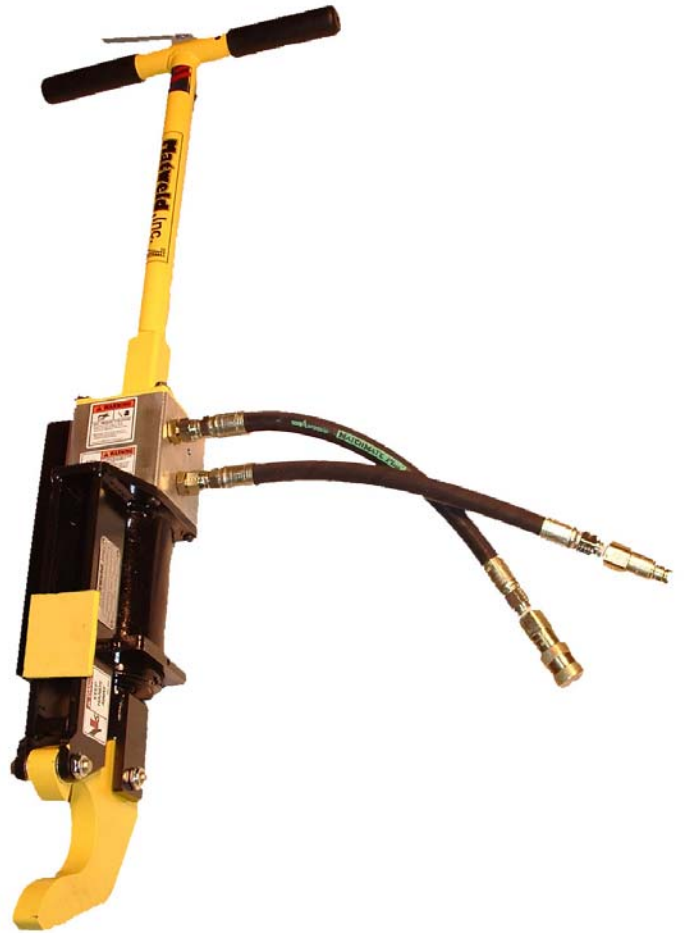


01200 SPRING ANCHOR APPLICATOR

The Matweld Spring Anchor Applicator is a lightweight and labor saving tool for the maintenance of way crew. A safe and quick method of installing spring anchor clips, which does not require “brute force” for clip installation. The tool utilizes a pivoting foot design with seven tons of force available to install the toughest clips. Operators will appreciate the clear view during installation.



FLOW	PRESSURE	DIMENSIONS	WEIGHT
5 gpm(19 lpm) or 10 gpm(38 lpm)	2000 psi (140 BAR)	15”(381mm) x 43”(1092mm)	45 lbs.(20kg)

ACCESSORIES:

01225 - HEAD WORN RAIL KIT

MATWELD, INC.

PHONE:(270) 444-0085

FAX:(270) 443-6180

Matweld reserves the right to change parts, features, or specifications without notice.

MATWELD, INC.

PHONE:(270) 444-0085

FAX:(270) 443-6180

Matweld reserves the right to change parts, features, or specifications without notice.

GENERAL SAFETY PRECAUTIONS:

TOOL OPERATORS AND MAINTENANCE PERSONNEL MUST ALWAYS COMPLY WITH THE SAFETY PRECAUTIONS GIVEN IN THIS MANUAL, AND WITH ALL STICKERS AND TAGS ATTACHED TO THE TOOL AND HOSE. ALL SAFETY PRECAUTIONS ARE GIVEN FOR YOUR SAFETY. READ TO UNDERSTAND AND FOLLOW ALL SAFETY, MAINTENANCE AND OPERATION INSTRUCTIONS BEFORE YOU USE OR MAINTAIN THE TOOL. REVIEW THE MANUAL DAILY BEFORE USING THE TOOL. IN ADDITION, FOLLOW ALL SAFETY GUIDELINES GIVEN YOU BY YOUR SUPERVISOR. DO NOT USE THE TOOL IF YOU HAVE ANY QUESTIONS ABOUT THE OPERATION, SAFETY OR MAINTENANCE OF THIS TOOL. FAILURE TO FOLLOW THESE INSTRUCTIONS CAN RESULT IN PERSONAL INJURY OR EQUIPMENT DAMAGE.

MATWELD HAS NO CONTROL OVER TOOL USE OR OPERATION ONCE IT LEAVES THE MATWELD PLANT. MATWELD HAS NO CONTROL OVER OPERATOR OR MAINTAINER SELECTION. THE CUSTOMER MUST ASSUME RESPONSIBILITY FOR THE TOOL'S SUITABILITY FOR A PARTICULAR FUNCTION, FOR ANYONE USING THE TOOL OR MAINTAINING THE TOOL REGARDING THEIR FITNESS TO USE THE TOOL OR REPAIR THE TOOL, UNDERSTANDING OF THE OPERATION AND SAFETY AND MAINTENANCE MANUAL, INTELLIGENCE TO USE GOOD JUDGMENT NECESSARY TO WORK SAFELY AND EFFICIENTLY WITHOUT ENDANGERING THEMSELVES OR BYSTANDERS IN THE WORK AREA.

- DO NOT OPERATE THE TOOL UNTIL YOU HAVE BEEN THOROUGHLY AND PROPERLY TRAINED OR UNDER THE SUPERVISION OF AN INSTRUCTOR.
- CHECK POWER SOURCE DAILY TO DETERMINE IF CORRECT FLOW AND PRESSURE ARE AVAILABLE. NEVER EXCEED FLOWS OR PRESSURES FOR THE TOOL BEING USED. PERSONAL INJURY OR DAMAGE TO THE TOOL CAN RESULT.
- OPERATORS MUST CLEAR THE WORK AREA OF NON-ESSENTIAL PERSONNEL. FLYING DEBRIS CAN CAUSE SERIOUS INJURY.
- THE OPERATOR MUST BE FAMILIAR WITH ALL PROHIBITED WORK AREAS SUCH AS UNSAFE GRADES, POOR FOOTING AREAS AND OVERHEAD HAZARDS.
- MAINTAIN BALANCE AND PROPER FOOTING AT ALL TIMES. NEVER OVERREACH TO THE EXTENT THAT A BROKEN PART OR SUDDEN MOVEMENT OF THE TOOL CAN CAUSE YOU TO LOSE YOUR BALANCE AND FALL, OR CAUSE INJURY TO YOUR SELF OR SOMEONE ELSE.

- WHEN WORKING NEAR ELECTRICAL CONDUCTORS, ALWAYS ASSUME THAT THE CONDUCTORS ARE ENERGIZED AND THAT HOSES AND CLOTHING CAN CONDUCT HARMFUL ELECTRICITY. USE HOSES LABELED AND CERTIFIED AS NON-CONDUCTIVE.
- DO NOT OPERATE THE TOOL AT EXCESSIVE FLUID TEMPERATURES. OPERATOR DISCOMFORT AND POTENTIAL BURNS CAN RESULT AT HIGH OIL TEMPERATURES.
- NEVER WEAR LOOSE CLOTHING THAT CAN GET ENTANGLED IN THE WORKING PARTS OF THE TOOLS OR BE CARELESS WITH HANDS, FEET OR OTHER BODY PARTS AROUND THE WORKING PARTS OF THE TOOLS. HYDRAULIC TOOLS EXERT HIGH TORQUE AND FORCE AND CAN CAUSE SERIOUS INJURY OR DEATH IF IMPROPERLY USED.
- TO AVOID PERSONAL INJURY OR EQUIPMENT DAMAGE, ALL TOOL REPAIR, MAINTENANCE OR SERVICE MUST ONLY BE PERFORMED BY AUTHORIZED AND PROPERLY TRAINED PERSONNEL.
- ALWAYS WEAR SAFETY EQUIPMENT SUCH AS OIL INJECTION RESISTANT WORK GLOVES, SAFETY GLASSES, SAFETY BOOTS, EAR PROTECTION AND OTHER SAFETY APPAREL DICTATED BY YOUR SUPERVISOR APPLICABLE FOR THE JOB YOU ARE DOING AND THE TOOL YOU ARE USING.
- DO NOT CLEAN, INSPECT, OR REPAIR THE TOOL WHILE CONNECTED TO THE POWER SOURCE. ACCIDENTAL ENGAGEMENT OF THE TOOL CAN CAUSE SERIOUS PERSONAL INJURY.
- OIL INJECTION HAZARD EXISTS WITH THIS TOOL. OIL INJECTION IS A CONDITION WHERE HYDRAULIC OIL IS INJECTED UNDER THE SKIN FROM PRESSURE IN THE LINE. ALWAYS WEAR GLOVES AND REPAIR ANY LEAKS IMMEDIATELY. NEVER CARRY A TOOL BY THE HOSES.
- DO NOT USE DAMAGED EQUIPMENT. IMMEDIATELY REPLACE ANY DAMAGED HOSES, FITTINGS, OR OTHER COMPONENTS SHOWING WIRE BRAID, NICKS, CUTS, DAMAGE OR ABRASIONS. FAILURE TO DO SO MAY RESULT IN EQUIPMENT DAMAGE AND / OR PERSONAL INJURY OR DEATH.
- CLEAN UP ANY OIL OR FLUID SPILLS IMMEDIATELY.

SAFETY PRECAUTIONS:

1. **ALWAYS** WEAR PROTECTIVE EQUIPMENT SUCH AS GLOVES, SAFETY GLASSES, EAR PROTECTION AND SAFETY SHOES.
2. DO NOT WEAR CLOTHING WHICH MAY BECOME ENTANGLED IN THE TOOL.
3. **ALWAYS** KEEP WORK AREA FREE OF TOOLS OR ANY OTHER OBJECTS WHICH MAY IMPAIR SOUND FOOTING.
4. **CAUTION** OIL INJECTION HAZARD EXISTS WITH THIS TOOL. OIL INJECTION IS A CONDITION WHERE THE HYDRAULIC OIL IS FORCED UNDER THE SKIN THROUGH PRESSURE IN THE LINE. ALWAYS WEAR GLOVES, DO NOT CARRY THE TOOL BY HYDRAULIC HOSES, AND REPAIR LEAKS IMMEDIATELY..
5. **DO NOT** CARRY THE TOOL BY THE PIGTAIL HOSES.
6. **NEVER** PUT YOUR FINGERS OR ANY OTHER OBJECT NEAR THE CLIPFOOT WHILE THE TOOL IS CONNECTED TO A POWER SOURCE.
7. **NEVER** USE YOU FINGERS TO DISLodge A SPRING ANCHOR, EVEN WITH THE TOOL DISCONNECTED FROM THE POWER SOURCE, THERE COULD STILL BE PRESSURE IN THE SPRING ANCHOR WHICH COULD CAUSE SUDDEN MOVEMENT OF THE CLIP FOOT.
8. **NEVER** PERFORM MAINTENANCE ON THE TOOL WHILE IT IS CONNECTED TO THE POWER SOURCE.
9. **NEVER** EXCEED MAXIMUM TOOL FLOW OR PRESSURE RATINGS. DAMAGE TO TOOL OR PERSONAL INJURY OR DEATH MAY RESULT.

FLOW: 5 OR 10 GPM (19 OR 38 LPM)
PRESSURE: 2000 PSI (140 BAR)
BACK PRESSURE: MAX 250 PS

10. **NEVER** LEAN ON TOOL OR USE IT FOR PRYING.

01200 SPRING ANCHOR APPLICATOR

FLOW: 5 OR 10 GPM (19 OR 38 LPM)

PRESSURE: 2000 PSI (140 BAR)

BACK PRESSURE: MAX 250 PSI

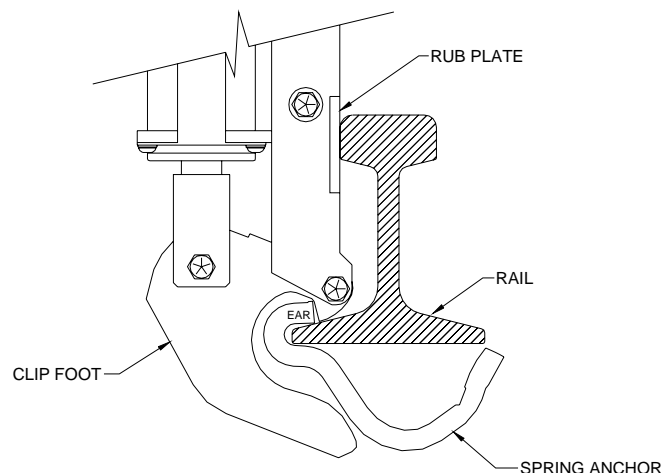
OPERATION:

1. WITH WITH THE POWER SOURCE IN THE "OFF" POSITION, CONNECT THE HOSES. DO NOT DRAG THE SERVICE HOSE BY PULLING WITH THE TOOL. LOOP THE SERVICE HOSE IN THE WORK AREA IN SUCH A WAY TO RELIEVE STRESS ON THE HOSE AND QUICK DISCONNECT FITTINGS WHILE WORKING. BE AWARE OF HOSE LOCATION AT ALL TIMES.
2. CONNECT THE TOOL TO THE POWER SOURCE.
3. TURN THE POWER SOURCE "ON" TO SUPPLY 5 OR 10 GPM TO TOOL.
4. SET THE SPRING ANCHOR APPLICATOR TOOL DOWN ON THE PRE-SET SPRING ANCHOR TO BE INSTALLED. MAKE SURE SPRING ANCHOR IS FULLY ENGAGED ON RAIL BASE AND CLIP FOOT IS POSITIONED BEHIND EAR OF SPRING ANCHOR AS SHOWN IN PICTURE BELOW.
5. DEPRESS TRIGGER TO INSTALL SPRING ANCHOR, HOLD TRIGGER UNTIL FULLY SEATED.

NOTE: AFTER YOU HEAR SPRING ANCHOR SNAP INTO PLACE, IMMEDIATELY RELEASE TRIGGER. CONTINUED DEPRESSING OF TRIGGER COULD DAMAGE THE SPRING ANCHOR CAUSING POSSIBLE PREMATURE FAILURE.

6. RELEASE TRIGGER AND APPLICATOR FOOT WILL AUTOMATICALLY RETRACT.
7. REMOVE SPRING APPLICATOR AND MOVE TO NEXT PRE-SET SPRING ANCHOR TO BE INSTALLED.

CAUTION: ALWAYS MAINTAIN SECURE FOOTING AND USE PROPER BODY POSITION. HOLD THE TOOL AWAY FROM YOUR BODY AND KEEP ARMS RELAXED AND FREE TO FLEX, SHOULD MINOR JERKING OF THE TOOL OCCUR DURING OPERATION.



MATWELD, INC.

PHONE:(270) 444-0085

FAX:(270) 443-6180

Matweld reserves the right to change parts, features, or specifications without notice.

01200 SPRING ANCHOR APPLICATOR

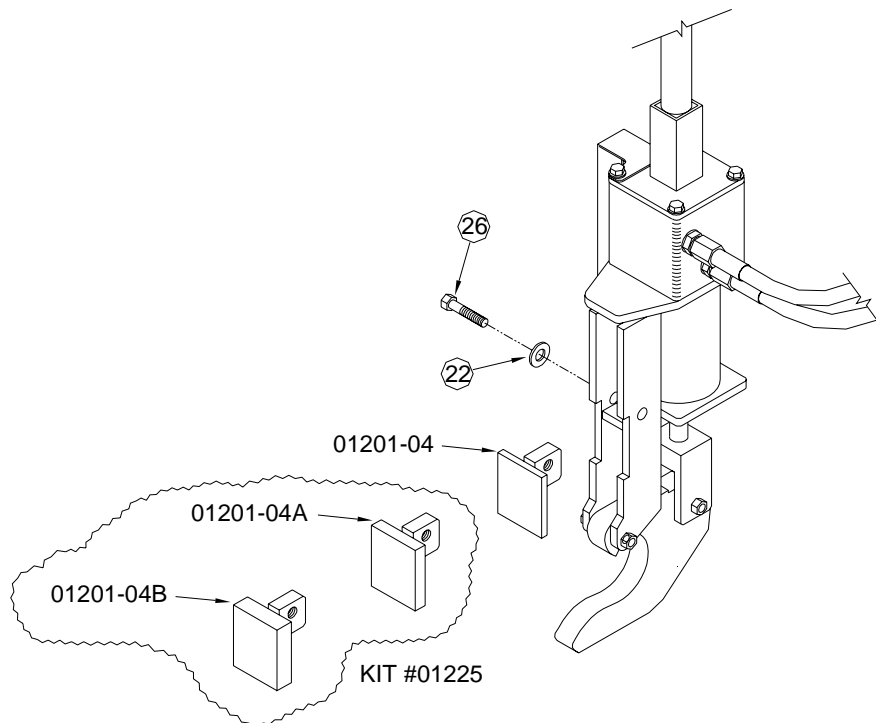
OPERATION CONT.:

USE OF SPRING ANCHOR APPLICATOR ON HEAD WORN RAIL

ON HEAD WORN RAIL, IT IS POSSIBLE FOR THE TOOL TO RUN OUT OF CYLINDER STROKE BEFORE THE SPRING ANCHOR SNAPS INTO PLACE. FOR INSTANCES WHERE THE TOOL IS BEING USED ON HEAD WORN RAIL, MATWELD OFFERS KIT #01225 WHICH INCLUDES TWO RUB BLOCKS OF DIFFERENT THICKNESS AND AN EXTRA MOUNTING BOLT AND FLAT WASHER.

THE TOOL IS SUPPLIED WITH THE STANDARD #01201-04 RUB BLOCK (COLOR CODE - YELLOW). THE #01225 KIT INCLUDES (1) #01201-04A RUB BLOCK (COLOR CODE - WHITE) WHICH IS A 1/4" THICKER THAN THE STANDARD BLOCK AND (1) #01201-04B RUB BLOCK (COLOR CODE - GREY) WHICH IS 1/2" THICKER THAN THE STANDARD BLOCK.

IT WILL BE THE OPERATORS RESPONSIBILITY TO DETERMINE WHICH RUB BLOCK IS REQUIRED FOR THE EXTENT OF HEAD WEAR PRESENCE. RUB BLOCKS ARE CHANGED OUT BY LOOSENING AND REMOVING THE 1/2-13 x 1-1/4" LG. HEX HEAD BOLT (ITEM #26), SWITCHING TO THE CORRECT RUB BLOCK, REPLACING BOLT, AND TIGHTENING.



01200 SPRING ANCHOR APPLICATOR

MAINTENANCE:

1. CHECK TOOL FOR OVERALL WORKING CONDITION **DAILY**.
2. INSPECT HOSES **DAILY**. AT FIRST SIGN OF ANY ABRASION OR CUT TO COVER, THE HOSES **MUST** BE CHANGED.
3. KEEP QUICK DISCONNECT COUPLERS **CLEAN AND LUBRICATED**.
4. USE ONLY RECOMMENDED HYDRAULIC OILS. NEVER USE ATF OR MOTOR OILS.

SUGGESTED HYDRAULIC OILS:

AMOCO RYKON MV	CITGO A/W ALL TEMP
SUN 2105	MOBIL D.T.E. 15
CHEVRON EP-MV	TEXACO "RANDO" HZ

IF YOUR LOCAL DISTRIBUTOR DOES NOT CARRY ANY OF THE ABOVE SUGGESTED HYDRAULIC OILS USE THE FOLLOWING GUIDELINES:

VISCOSITY @ 100° F100-190SUS
VISCOSITY INDEX.....MIN. 150

EACH APPLICATION IS DIFFERENT, IF THERE ARE ANY QUESTIONS CONCERNING THE RIGHT CHOICE FOR YOUR PARTICULAR APPLICATION CALL MATWELD FOR ASSISTANCE.

5. HAVE TOOL INSPECTED, AT LEAST ANNUALLY, BY A MATWELD OR MATWELD QUALIFIED SERVICE REPRESENTATIVE TO DETERMINE IF TOOL IS IN NEED OF SAFETY CHANGES OR WORN PART REPLACEMENT.
6. CONTACT MATWELD ON A PERIODIC BASIS, AT LEAST ANNUALLY, FOR SERVICE BULLETINS, SAFETY NOTICES, OR OTHER IMPORTANT INFORMATION PERTAINING TO THIS TOOL.

REVIEW OF HYDRAULIC PRINCIPLES

A. TOOL CIRCUIT

1. HYDRAULIC FORMULAS:

$$\text{GPM} = \frac{\text{CID} \times \text{RPM}}{231} \qquad \text{HP} = \frac{\text{GPM} \times \text{PSI}}{1456.9}$$

Example: HP required to deliver 10 GPM at 1500 PSI.

$$\frac{10 \text{ GPM} \times 1500 \text{ PSI}}{1456.9} = \frac{15000}{1456.9} = 10.3 \text{ HP}$$

(subtract back pressure for tool HP)

Estimated HP delivered by pump or used by tool.

GPM	PSI	500	1,000	1,500	2,000	2,500	3,000
3	1.03	2.06	3.09	4.12	5.15	6.18	
5	1.72	3.43	5.15	6.86	8.58	10.30	
10	3.43	6.86	10.3	13.70	17.20	20.60	
15	5.15	10.30	15.40	20.60	25.70	30.90	

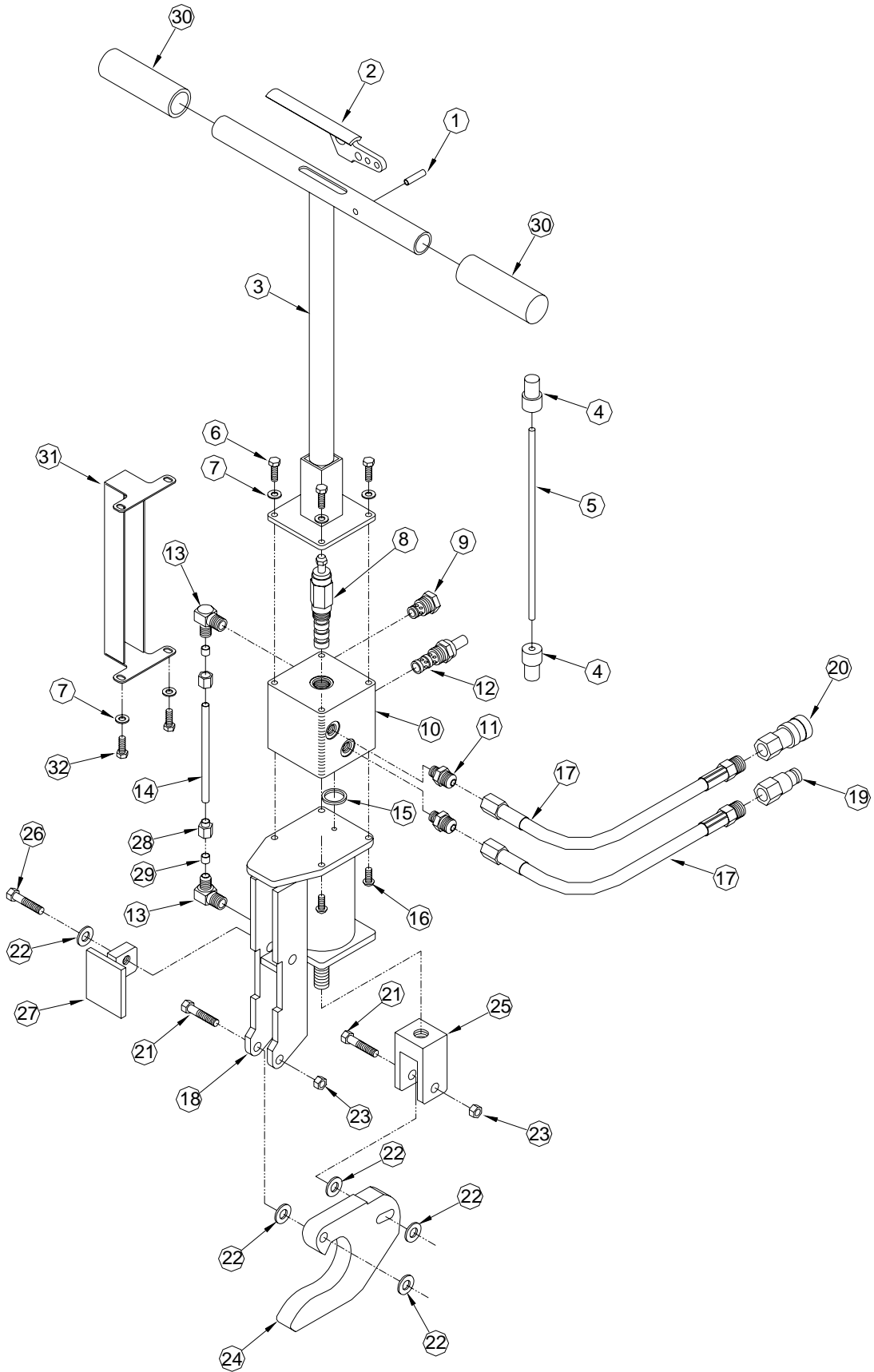
2. BACK PRESSURE

BACK PRESSURE MEASURED AT THE TOOL RETURN PORT MUST NOT EXCEED THE MANUFACTURERS BACK PRESSURE RATING. MOST MANUFACTURERS LIST THE MAXIMUM BACK PRESSURE FOR THEIR HYDRAULIC TOOLS AT 250 PSI. BACK PRESSURE MEASURED ON THE RETURN SIDE OF THE TOOL IS THE FORCE REQUIRED TO GET THE OIL BACK TO THE TANK. IN ALMOST ALL CASES THE LOWER THE BACK PRESSURE THE BETTER THE TOOL PERFORMANCE. FIRST, THE BACK PRESSURE IS SUBTRACTED FROM THE MAXIMUM TOOL PRESSURE TO ARRIVE AT A MAXIMUM TOOL OPERATING PRESSURE. FOR EXAMPLE, TOOLS WITH 2000 PSI OPERATING PRESSURE ARE INSTALLED ON A SYSTEM WITH 250 PSI BACK PRESSURE. THIS LEAVES 1750 PSI AS A MAXIMUM TOOL PRESSURE. IMAGINE A SYSTEM WITH 500 PSI BACK PRESSURE. 2000 MINUS 500 PSI BACK PRESSURE LEAVES ONLY 1500 PSI FOR THE TOOL. SECOND, TOOLS ARE DESIGNED FOR PRESSURE TO BUILD ON THE PRESSURE SIDE OF THE TOOL. IF TOO MUCH PRESSURE BUILDS ON THE RETURN SIDE, NOT ONLY IS PERFORMANCE EFFECTED, BUT SEALS MAY BLOW. THIS IS WHY IT IS VERY IMPORTANT TO DIRECT THE FLOW INTO THE TOOL CORRECTLY. REVERSING THE HOSES TO TEST MAY RESULT IN BLOWN SEALS, DAMAGE TO THE TOOL, AND PERSONAL INJURY.

01200 SPRING ANCHOR APPLICATOR

GENERAL NOTES:

01200 SPRING ANCHOR APPLICATOR



MATWELD, INC.

PHONE:(270) 444-0085

FAX:(270) 443-6180

Matweld reserves the right to change parts, features, or specifications without notice.

01200 SPRING ANCHOR APPLICATOR

PARTS LIST

ITEM NO.	PART NO.	DESCRIPTION	QUANTITY
1	A6108	5/16" DIA. x 1-1/4" LG. SPRING PIN	1
2	01101	TRIGGER	1
3	01203	HANDLE ASSEMBLY	1
4	01204	TRIGGER PLUNGER	2
5	01205	TRIGGER ROD	1
6	A1022	5/16-18UNC x 1" LG. GR.5 ZP	4
7	A2191	5/16" ID SAE FLAT WASHER ZP	6
8	01102	VALVE - TRIGGER	1
9	01106	VALVE - CHECK	1
10	01202	MANIFOLD	1
11	6400-08-06	#8 MJIC x #6 MOR STR.	2
12	05151	VALVE - FLOW CONTROL	1
13	6801-06-06	#6 MOR x #6 MJIC 90 EL	2
14	01206	RETRACT TUBE	1
15	00921	MANIFOLD O-RING	1
16	A6356	5/16-18 x 1" LG. BHCS	4
17	00816	PIGTAIL HOSE	2
18	01201	CYLINDER ASSEMBLY	1
19	00146	QUICK DISCONNECT NIPPLE	1
20	00145	QUICK DISCONNECT COUPLER	1
21	A1094	1/2-13UNC x 2-1/2" LG. GR. 8	2
22	A2194	1/2" ID SAE FLAT WASHER ZP	5
23	A2055	1/2-13 NYLOCK JAM NUT	2
24	01207	CLIP FOOT	1
25	01208	CLEVIS	1
26	A1080	1/2-13UNC x 1-1/4" LG. GR. 5 ZP	1
27	01201-04	RUB PLATE	1
28	318-06	3/8" TUBE NUT	2
29	319-06	3/8" TUBE SLEEVE	2
30	01211	HANDLE GRIP	2
31	01210	TUBE GUARD	1
32	A1021	5/16-18UNC x 3/4" LG. GR.5 ZP	2

ACCESSORIES:

01225 - HEAD WORN RAIL KIT

MATWELD, INC.

PHONE:(270) 444-0085

FAX:(270) 443-6180

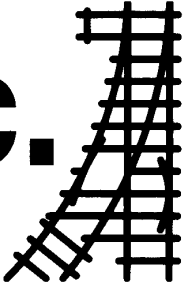
Matweld reserves the right to change parts, features, or specifications without notice.

01200 SPRING ANCHOR APPLICATOR

DECAL LEGEND:

Matweld, Inc.

PADUCAH, KY

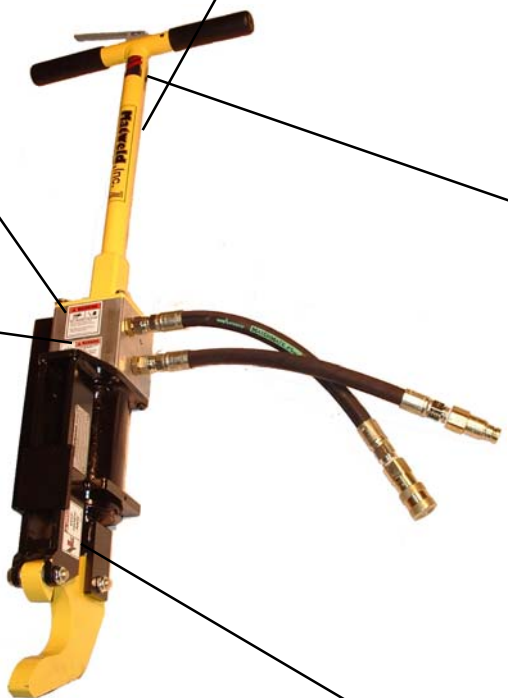


DCL-1007

⚠ WARNING





HIGH - PRESSURE FLUID HAZARD
 TO prevent serious injury or death:
 * Relieve pressure on system before repairing or adjusting or disconnecting.
 † Wear proper hand and eye protection when searching for leaks. Use wood or cardboard instead of hands.
 ‡ Keep all components in good repair. DCL-1002





PROUDLY
MADE IN
USA

DCL-1078



⚠ WARNING

To prevent Serious Injury or Death
 * Avoid unsafe operation or maintenance.
 * Do not operate or work on this machine without reading and understanding the operator's manual.
 † If manual is lost, contact MATWELD INC. for a new manual.
 DCL-1001



⚠ DANGER

**KEEP
HANDS
AWAY**

DCL-1027

MATWELD, INC.

PHONE:(270) 444-0085

FAX:(270) 443-6180

Matweld reserves the right to change parts, features, or specifications without notice.

LIMITED WARRANTY

MATWELD, INC., PADUCAH, KY., WARRANTS TO THE ORIGINAL PURCHASER OF THIS PRODUCT THAT THE PRODUCT WILL BE FREE FROM DEFECTS IN MATERIAL AND WORKMANSHIP FOR THE PERIOD OF ONE (1) YEAR AFTER THE DELIVERY OF SUCH PRODUCT TO THE CUSTOMER. OTHER EQUIPMENT AND PARTS USED, BUT NOT MANUFACTURED BY MATWELD INC. ARE COVERED DIRECTLY BY THE WARRANTY OF THE MANUFACTURER OF THOSE PRODUCTS. PROOF OF PURCHASE MUST BE DOCUMENTED INCLUDING REFERENCE TO A SERIAL NUMBER LOCATED ON EACH TOOL. THE PURCHASER'S ONLY REMEDIES UNDER THIS LIMITED WARRANTY SHALL BE LIMITED AT MATWELD'S SOLE OPTION TO THE FOLLOWING: REPAIR, REPLACEMENT OR REFUND OF THE PURCHASE PRICE OF THE DEFECTIVE PRODUCTS. EACH OF THESE REMEDIES REQUIRES TIMELY NOTIFICATION OF THE DEFECT IN THE PRODUCT AND SUBSTANTIATION THAT THE PRODUCT HAS BEEN PROPERLY STORED, MAINTAINED AND USED. MATWELD'S OBLIGATIONS HEREUNDER EXTEND ONLY TO THE PURCHASER OF THE PRODUCT AND NOT TO ANY THIRD PARTY.

AS A CONDITION PRECEDENT TO MATWELD'S OBLIGATION HEREUNDER, THE DEFECTIVE PRODUCT MUST NOT HAVE BEEN ALTERED OR MODIFIED WITHOUT THE EXPRESS WRITTEN APPROVAL OF MATWELD, INC. THE PRODUCT MUST NOT HAVE BEEN SUBJECTED TO DELIBERATE DAMAGE, SHIPPING DAMAGE, NEGLIGENCE, TAMPERING BY UNAUTHORIZED PERSONNEL OR DAMAGE BY IMPROPER USE, STORAGE OR MAINTENANCE. SERIAL NUMBERS MUST NOT HAVE BEEN ALTERED, DEFACED OR REMOVED. SUCH ACTION VOIDS LIMITED WARRANTY.

EXCLUSIONS TO LIMITED WARRANTY

THIS LIMITED WARRANTY IS EXCLUSIVE AND IS IN LIEU OF ANY OTHER WARRANTY, WRITTEN OR ORAL, EXPRESSED OR IMPLIED, INCLUDING, WITHOUT LIMITATION, ANY IMPLIED WARRANTY OR MERCHANTABILITY OR FITNESS FOR A PARTICULAR PURPOSE.

LIMITED WARRANTY DOES NOT COVER NORMAL WEAR AND TEAR ITEMS SUCH AS FILTERS, HOSES, COUPLERS, BITS, SOCKETS, AUGERS, AND BATTERIES.

LIMITATION OF LIABILITY

EXCEPT AS PROVIDED ABOVE, MATWELD SHALL IN NO EVENT BE LIABLE OR RESPONSIBLE FOR ANY INJURY, LOSS OR DAMAGE, DIRECT, INCIDENTAL OR CONSEQUENTIAL, ARISING OUT OF THE USE OR MISUSE OR INABILITY TO USE THE PRODUCT, HOWEVER CAUSED AND ON ANY THEORY OF LIABILITY INCLUDING, WITHOUT LIMITATIONS, BREACH OF CONTRACT, TORT, (INCLUDING NEGLIGENCE OR STREET LIABILITY) AND NOT WITHSTANDING ANY FAILURE OF ANY REMEDY HEREIN OF ITS ESSENTIAL PURPOSE, EVEN IF MATWELD WAS AWARE OF THIS POSSIBILITY OF SUCH DAMAGE. MATWELD'S LIMITED WARRANTY AS SET FORTH ABOVE SHALL NOT BE ENLARGED, DIMINISHED OR AFFECTED BY, AND NO OBLIGATION OR LIABILITY SHALL ARISE OR GO OUT OF THE RENDERING OF TECHNICAL ADVICE OR SERVICE BY MATWELD OR ITS AGENTS. THE FOREGOING MAY NOT BE CHANGED EXCEPT BY WRITTEN AGREEMENT SIGNED BY AN AUTHORIZED OFFICER OF MATWELD, THE REMEDIES SET FORTH HEREIN ARE EXCLUSIVE.

MATWELD, INC.

PHONE:(270) 444-0085

FAX:(270) 443-6180

Matweld reserves the right to change parts, features, or specifications without notice.

CUSTOMER INFORMATION:

Name _____

Company _____

Serial # of your Matweld tool _____

(Upon receiving your Matweld tool, make sure to list serial number above so that a good record is kept for order information.)

MATWELD HYDRAULIC TOOL LIST

*All Matweld Hydraulic Tools operate at
5 or 10 GPM @ 2000 PSI*

POWER UNITS:

70700 – HYDRA POWERED MODULAR SYSTEM

02900 – DIESEL 1-10 GPM OR 2-5 GPM

(OPTIONAL CATALYTIC EXHAUST AND/OR MSHA CERTIFIED)

00100 – GASOLINE 1-10 GPM OR 2-5 GPM

02050 – GASOLINE 1-5 GPM

TRACK TOOLS:

01600A – 1” IMPACT WRENCH

04500D – ½” IMPACT DRILL

00800A – 16” RAIL SAW

03900A – REVERSING RAIL SAW

01100 – SPIKE PULLER

01300A – TIE TAMPER

01400 – SPIKE DRIVER

01500 – RAIL DRILL

01000 – CHAIN SAW

GRINDERS:

04600 & 04650– STRAIGHT STONE CW & TRIGGER VERSION

04700 & 04750 – STRAIGHT STONE CCW & TRIGGER VERSION

04800 & 04850 – CUPSTONE & TRIGGER VERSION

00700 – RAIL SURFACING GUIDE

04300 & 04350 – 6” PROFILE & TRIGGER VERSION

02400 – 10” OR 14” FROG AND SWITCH GRINDER

OTHER PRODUCTS:

HYDRAULIC MANIFOLDS

HYDRAULIC TEST GAUGES

HOSE REELS

HYDRAULIC HOSES

ACCESSORIES