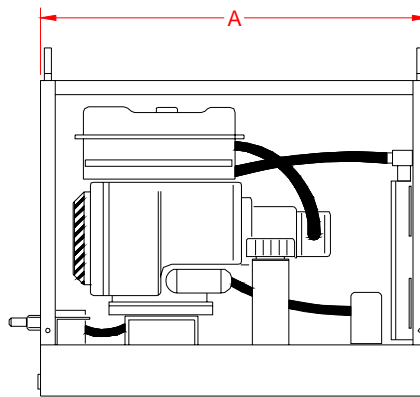
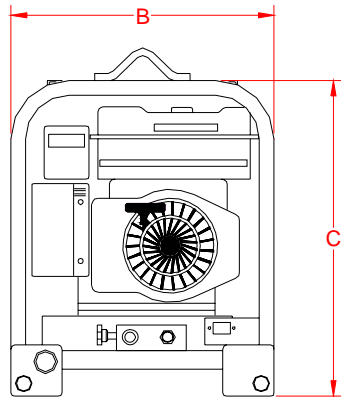


**02050K 5 gpm  
 POWER UNIT**

The Matweld Single Circuit Power Unit is designed to deliver 1-5 gpm circuit. It is perfect for small jobs. Designed for inspection vehicles where size and weight are primary concerns.



ENGINE	HYDRAULICS	DIMENSIONS	WEIGHT
9 hp Kohler Fuel: gasoline Start: electric w/pull start	1-5gpm (19 lpm) 2000 psi (140 bar)	A - 27-1/2" B - 18" C -26"	165 lbs. (75 kg)

**MATWELD, INC.**

**PHONE:(270) 444-0085**

**FAX:(270) 443-6180**

*Matweld reserves the right to change parts, features, or specifications without notice.*

01/01

## **GENERAL SAFETY PRECAUTIONS:**

TOOL OPERATORS AND MAINTENANCE PERSONNEL MUST ALWAYS COMPLY WITH THE SAFETY PRECAUTIONS GIVEN IN THIS MANUAL, AND WITH ALL STICKERS AND TAGS ATTACHED TO THE TOOL AND HOSE. ALL SAFETY PRECAUTIONS ARE GIVEN FOR YOUR SAFETY. READ TO UNDERSTAND AND FOLLOW ALL SAFETY, MAINTENANCE AND OPERATION INSTRUCTIONS BEFORE YOU USE OR MAINTAIN THE TOOL. REVIEW THE MANUAL DAILY BEFORE USING THE TOOL. IN ADDITION, FOLLOW ALL SAFETY GUIDELINES GIVEN YOU BY YOUR SUPERVISOR. DO NOT USE THE TOOL IF YOU HAVE ANY QUESTIONS ABOUT THE OPERATION, SAFETY OR MAINTENANCE OF THIS TOOL. FAILURE TO FOLLOW THESE INSTRUCTIONS CAN RESULT IN PERSONAL INJURY OR EQUIPMENT DAMAGE.

MATWELD HAS NO CONTROL OVER TOOL USE OR OPERATION ONCE IT LEAVES THE MATWELD PLANT. MATWELD HAS NO CONTROL OVER OPERATOR OR MAINTAINER SELECTION. THE CUSTOMER MUST ASSUME RESPONSIBILITY FOR THE TOOL'S SUITABILITY FOR A PARTICULAR FUNCTION. DURING USE OF TOOL, GOOD JUDGEMENT MUST BE USED TO WORK SAFELY AND EFFICIENTLY WITHOUT ENDANGERING THEMSELVES OR BYSTANDERS. UNDERSTANDING OF THE OPERATION AND MAINTENANCE MANUAL IS ESSENTIAL FOR ANYONE USING OR MAINTAINING THE TOOL.

- DO NOT OPERATE THE TOOL UNTIL YOU HAVE BEEN THOROUGHLY AND PROPERLY TRAINED OR UNDER THE SUPERVISION OF AN INSTRUCTOR.
- CHECK POWER SOURCE DAILY TO DETERMINE IF CORRECT FLOW AND PRESSURE ARE AVAILABLE. NEVER EXCEED FLOWS OR PRESSURES FOR THE TOOL BEING USED. PERSONAL INJURY OR DAMAGE TO THE TOOL CAN RESULT.
- OPERATORS MUST CLEAR THE WORK AREA OF NON-ESSENTIAL PERSONNEL. FLYING DEBRIS CAN CAUSE SERIOUS INJURY.
- THE OPERATOR MUST BE FAMILIAR WITH ALL PROHIBITED WORK AREAS SUCH AS UNSAFE GRADES, POOR FOOTING AREAS AND OVERHEAD HAZARDS.
- MAINTAIN BALANCE AND PROPER FOOTING AT ALL TIMES. NEVER OVERREACH TO THE EXTENT THAT A BROKEN PART OR SUDDEN MOVEMENT OF THE TOOL CAN CAUSE YOU TO LOSE YOUR BALANCE AND FALL, OR CAUSE INJURY TO YOUR SELF OR SOMEONE ELSE.

- WHEN WORKING NEAR ELECTRICAL CONDUCTORS, ALWAYS ASSUME THAT THE CONDUCTORS ARE ENERGIZED AND THAT HOSES AND CLOTHING CAN CONDUCT HARMFUL ELECTRICITY. USE HOSES LABELED AND CERTIFIED AS NON-CONDUCTIVE.
- DO NOT OPERATE THE TOOL AT EXCESSIVE FLUID TEMPERATURES OPERATOR DISCOMFORT AND POTENTIAL BURNS CAN RESULT AT HIGH OIL TEMPERATURES.
- NEVER WEAR LOOSE CLOTHING THAT CAN GET ENTANGLED IN THE WORKING PARTS OF THE TOOLS OR BE CARELESS WITH HANDS, FEET OR OTHER BODY PARTS AROUND THE WORKING PARTS OF THE TOOLS. HYDRAULIC TOOLS EXERT HIGH TORQUE AND FORCE AND CAN CAUSE SERIOUS INJURY OR DEATH IF IMPROPERLY USED.
- TO AVOID PERSONAL INJURY OR EQUIPMENT DAMAGE, ALL TOOL REPAIR, MAINTENANCE OR SERVICE MUST ONLY BE PERFORMED BY AUTHORIZED AND PROPERLY TRAINED PERSONNEL.
- ALWAYS WEAR SAFETY EQUIPMENT SUCH AS OIL INJECTION RESISTANT WORK GLOVES, SAFETY GLASSES, SAFETY BOOTS, EAR PROTECTION AND OTHER SAFETY APPAREL DICTATED BY YOUR SUPERVISOR APPLICABLE FOR THE JOB YOU ARE DOING AND THE TOOL YOU ARE USING.
- DO NOT CLEAN INSPECT OR REPAIR THE TOOL WHILE CONNECTED TO THE POWER SOURCE. ACCIDENTAL ENGAGEMENT OF THE TOOL CAN CAUSE SERIOUS PERSONAL INJURY.
- OIL INJECTION HAZARD EXISTS WITH THIS TOOL. OIL INJECTION IS A CONDITION WHERE HYDRAULIC OIL IS INJECTED UNDER THE SKIN FROM PRESSURE IN THE LINE. ALWAYS WEAR GLOVES AND REPAIR ANY LEAKS IMMEDIATELY. NEVER CARRY A TOOL BY THE HOSES.
- DO NOT USE DAMAGED EQUIPMENT. IMMEDIATELY REPLACE ANY DAMAGED HOSES, FITTINGS, OR OTHER COMPONENTS SHOWING WIRE BRAID, NICKS, CUTS, DAMAGE OR ABRASIONS. FAILURE TO DO SO MAY RESULT IN EQUIPMENT DAMAGE AND / OR PERSONAL INJURY OR DEATH.
- CLEAN UP ANY OIL OR FLUID SPILLS IMMEDIATELY.



## 02050K 5 GPM POWER UNIT

# **SAFETY PRECAUTIONS:**

1. **ALWAYS** WEAR PROTECTIVE EQUIPMENT SUCH AS GLOVES, SAFETY GLASSES, EAR PROTECTION AND SAFETY SHOES.
2. DO NOT WEAR CLOTHING WHICH MAY BECOME ENTANGLED IN THE TOOL.
3. **ALWAYS** KEEP WORK AREA FREE OF TOOLS OR ANY OTHER OBJECTS WHICH MAY IMPAIR SOUND FOOTING.
4. **CAUTION** OIL INJECTION HAZARD EXISTS WITH THIS TOOL. OIL INJECTION IS A CONDITION WHERE THE HYDRAULIC OIL IS FORCED UNDER THE SKIN THROUGH PRESSURE IN THE LINE. ALWAYS WEAR GLOVES, DO NOT CARRY THE TOOL BY HYDRAULIC HOSES, AND REPAIR LEAKS IMMEDIATELY.
5. **DO NOT** OPERATE THE POWER UNIT UNTIL YOU HAVE BEEN PROPERLY TRAINED OR UNDER THE SUPERVISION OF A QUALIFIED INSTRUCTOR.
6. **NEVER** STORE ENGINE OIL OR HYDRAULIC OIL NEAR OXYGEN TANKS OR LINES.
7. **NEVER** ADD ENGINE OIL OR HYDRAULIC OIL WHEN A SPILL MIGHT COME IN CONTACT WITH YOUR OXYGEN LINES, TORCH OR FITTINGS.
8. **CLEAN** UP SPILLS IMMEDIATELY.
9. **NEVER** PERFORM GRINDING OR SAWING OPERATIONS THAT DIRECT SPARKS INTO THE CLOSE PROXIMITY OF THE POWER UNIT OR FLAMMABLE MATERIALS.
10. **NEVER** OPERATE THE POWER UNIT WITH ANY PART OF THE EXHAUST SYSTEM OR THE HEAT DEFLECTOR REMOVED.
11. **PERIODICALLY**, INSPECT THE FUEL TANK, FUEL LINE AND FITTINGS FOR CRACKS OR LEAKS AND REPAIR OR REPLACE AS REQUIRED.
12. AVOID OVER FILLING THE FUEL TANK; WIPE UP ANY SPILLS **IMMEDIATELY** AND PROPERLY DISPOSE OF THE CLEANING RAGS.
13. **ALWAYS** TURN POWER UNIT “**OFF**” AND DISCONNECT HOSES BEFORE PERFORMING ANY MAINTENANCE.

## 02050K 5 GPM POWER UNIT

**FLOW:** 5 GPM PORT (19LPM)  
**PRESSURE:** 2000 PSI (140 BAR)

### OPERATION:

- **BEFORE STARTING THE POWER UNIT, CHECK ALL FLUID LEVELS, AND ADD FUEL, MOTOR OIL, AND OR HYDRAULIC OIL AS REQUIRED.**
1. TO START THE POWER UNIT, CHECK TO MAKE SURE THE CONTROL VALVE IS IN THE "OFF" POSITION.
  2. TURN THE CHOKE ALL THE WAY TO THE LEFT.
  3. ADVANCE THE THROTTLE TO 3/4 OPEN POSITION.
  4. TURN THE STARTER LOCATED ON THE FRONT OF ENGINE.
  6. ALLOW THE ENGINE TO WARM UP UNTIL IT WILL RUN SMOOTHLY WITH THE CHOKE IN THE RUN POSITION.
  7. CONNECT THE POWER TRANSMISSION HOSES TO THE QUICK DISCONNECTS.
  8. CONNECT THE TOOL(S) TO THE POWER TRANSMISSION HOSE(S) BEFORE TURNING THE FLOW CONTROL VALVE ON THE POWER UNIT.
  9. ADVANCE THE THROTTLE TO FULL AND ROTATE FLOW CONTROL VALVE.
  10. IN COLD WEATHER START THE POWER UNIT AND ALLOW THE OIL TO CIRCULATE BEFORE USING THE TOOLS. IN EXTREMELY COLD WEATHER, REFER TO COLD WEATHER OPERATION SECTION OF THIS MANUAL!
  11. DURING WARM WEATHER, THE HYDRAULIC OIL COOLER FAN SHOULD BE TURNED ON FOR ADDITIONAL COOLING CAPACITY. THE FAN CONTROL SWITCH IS LOCATED ON THE ENGINE CONTROL PANEL. NOTE: THE FAN WILL NOT RUN WHEN THE ENGINE IS OFF.
  12. TO SHUT DOWN THE POWER UNIT OR TO CHANGE TOOLS, TURN THE CONTROL VALVES TO THE "OFF" POSITION AND CHANGE THE THROTTLE TO "IDLE".
  13. ALLOW THE ENGINE TO RETURN TO AN IDLE BEFORE TURNING THE KILL SWITCH "OFF".

## **02050K 5GPM POWER UNIT**

### **COLD WEATHER OPERATION:**

THE POWER UNIT AND TOOLS WILL PERFORM WELL IN EXTREME COLD WEATHER IF THE WARM-UP PROCEDURES ARE FOLLOWED. THESE PROCEDURES SHOULD BE USED ANY-TIME THE TEMPERATURE IS BELOW 40 DEGREES FAHRENHEIT (4.4C).

IN EXTREMELY COLD CLIMATES, CHANGING TO AN AIRCRAFT QUALITY HYDRAULIC OIL (MIL. SPEC. H-5606) WILL REDUCE THE WARM UP TIME REQUIRED. WHEN WARM WEATHER RETURNS, BE SURE TO CHANGE BACK TO A HIGHER VISCOSITY HYDRAULIC OIL.

**NOTE: REFER TO ITEMS 1-5 UNDER OPERATING PROCEDURES ON PAGE 7 BEFORE STARTING.**

1. START THE POWER UNIT AND LET IT RUN UNTIL IT IS RUNNING SMOOTHLY WITH THE CHOKE OFF.
2. CONNECT THE POWER TRANSMISSION HOSES TO THE POWER UNIT AND COUPLE THE POWER TRANSMISSION HOSE TOOL ENDS TOGETHER FORMING A "LOOP".
3. TURN TOOL CONTROL VALVE "ON" TO CIRCULATE OIL THROUGH THE HOSE.
4. WHEN THE OIL REACHES 50 DEGREES FAHRENHEIT (10 C) YOU MAY BEGIN TO OPERATE THE TOOLS.

### **MAINTENANCE:**

1. CHECK TOOL DAILY FOR PROPER OPERATION, LEAKS, OR DAMAGE.
2. INSPECT HOSES DAILY. REPLACE CUT, BURNED, OR OTHERWISE DAMAGED HOSES.
3. KEEP QUICK DISCONNECT COUPLERS CLEAN AND LUBRICATED.
4. USE HYDRAULIC FLUIDS THAT COMPLY WITH HTMA SPECIFICATION 5.7, THE HYDRAULIC FLUID SHOULD HAVE A VISCOSITY BETWEEN 100 AND 400 SSU (20-82 CENTISTOKES) AT THE MAXIMUM AND MINIMUM EXPECTED OPERATING TEMPERATURES. PETROLEUM BASED HYDRAULIC FLUIDS WITH ANTI-WEAR PROPERTIES AND A VISCOSITY INDEX OF OVER 140 WORK FOR A WIDE RANGE OF OPERATING CONDITIONS.

## **02050K 5 GPM POWER UNIT**

### **MAINTENANCE CONT'D.**

#### **THE FOLLOWING OILS MEET HTMA SPECIFICATION 5.7:**

AMOCO RYKON MV  
SUNVIS 706  
CHEVRON EP-MV

CITGO A/W ALL TEMP  
MOBIL D.T.E. 13  
TEXACO "RANDO" HDAZ

OTHER FLUIDS THAT MEET OR EXCEED THIS SPECIFICATION CAN BE USED.

\*SEE **COLD WEATHER OPERATION** HYDRAULIC OIL NOTE.

5. HAVE TOOL INSPECTED, AT LEAST ANNUALLY, BY MATWELD OR A MATWELD QUALIFIED SERVICE REPRESENTATIVE TO DETERMINE IF TOOL IS IN NEED OF SAFETY CHANGES OR WORN PART REPLACEMENT.
6. CONTACT MATWELD ON A PERODIC BASIS, AT LEAST ANNUALLY, FOR SERVICE BULLETINS, SAFETY NOTICES, OR OTHER IMPORTANT INFORMATION PERTAINING TO THIS TOOL.

### **CHANGING TOOLS:**

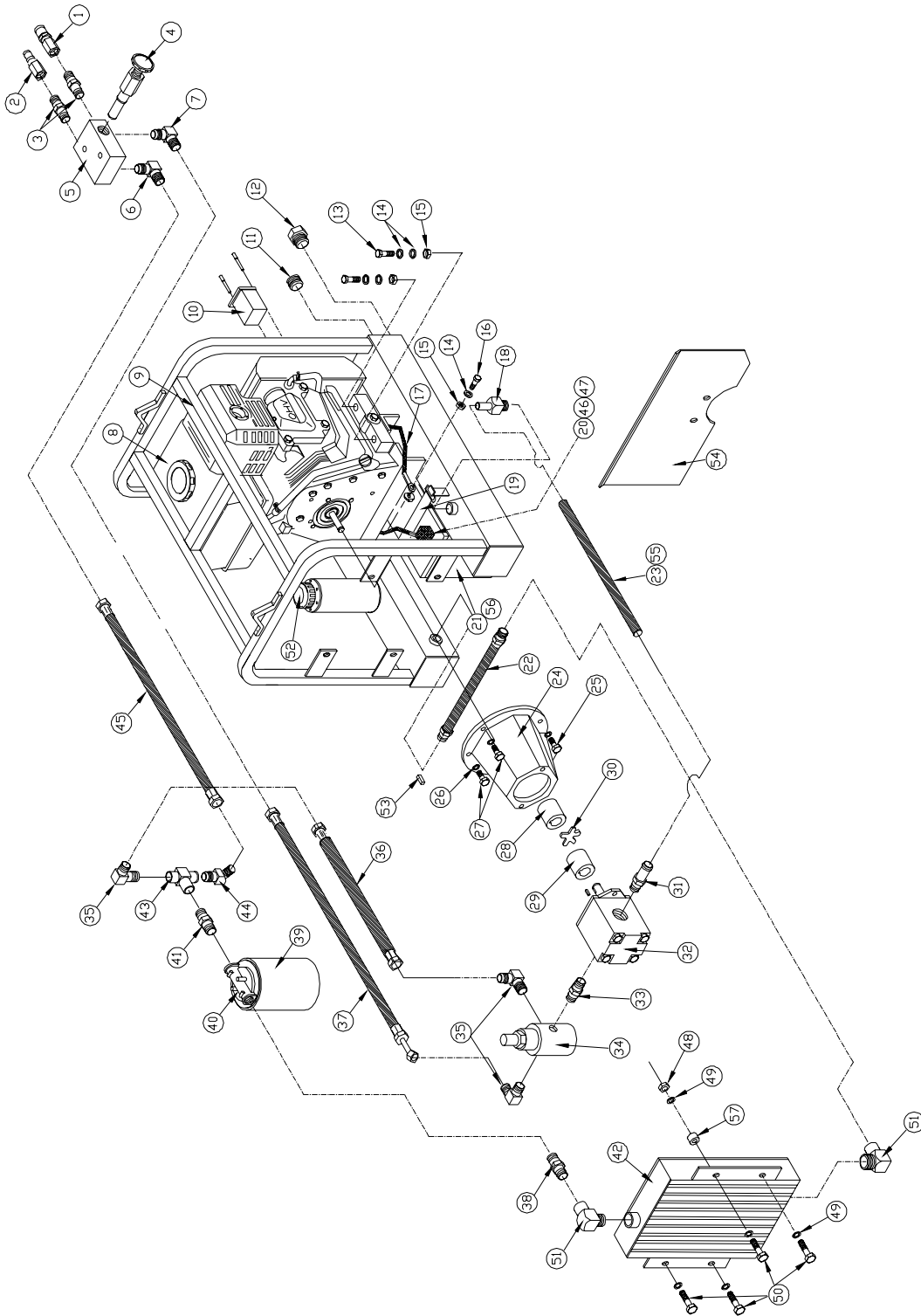
1. ALWAYS RETURN THE ENGINE TO "IDLE" AND TURN THE CONTROL KNOBS TO THE "OFF" POSITION BEFORE DISCONNECTING HOSES.
2. ONCE THE TOOL HAS BEEN CHANGED, ADVANCE THE ENGINE TO "FULL" THROTTLE AND TURN THE VALVE(S) TO THE "ON" POSITION DEPENDING ON FLOW REQUIREMENTS OF THE TOOL TO BE USED.

# 02050K 5 GPM POWER UNIT

NOTE SOME LINES OMITTED FOR CLARITY

REV. 1 3/02

REV. 2 1/05



**MATWELD, INC.**

**PHONE:(270) 444-0085**

**FAX:(270) 443-6180**

*Matweld reserves the right to change parts, features, or specifications without notice.*

## 02050K PARTS LIST

ITEM NO.	PART NO.	DESCRIPTION	QUANTITY
1	00145	QUICK DISCONNECT COUPLER	1
2	00146	QUICK DISCONNECT NIPPLE	1
3	69-08-08	1/2 NPT HEX NIPPLE	2
4	00137	VALVE - CONTROL	1
5	01509	VALVE BODY	1
6	405-08-06	#8 MJIC x #6 NPT MP 90	1
7	2501-10-06	3/8 MP x #10 MJIC 90	1
8	02002K	10 hp KOHLER ENGINE	1
9	02051	FRAME	1
10	02903	HOUR METER	1
11	169P-08	1/2 NPT PLUG	2
12	SVM-16	SIGHT GLASS	1
13	A1027	5/16-18UNC x 2-1/4" LG GR 5	2
14	A2191	5/16" I.D. SAE FLAT WASHER	12
15	A2048	5/16-18 NYLOCK NUT	7
16	A1022	5/16-18UNC x 1" LG. GR 5 ZP	1
17	00120	BATTERY GROUND CABLE	1
18	4404-12-12	3/4 HOSE x 3/4 MP STR. FIT	3
19	00123	BATTERY STRAP	1
20	00121-02-1	BATTERY POST COVER	1
21	00122	BATTERY	1
22	02008	COOLER TANK HOSE	1
23	01027	POSITIVE CABLE	1
24	00117	PUMP BRACKET	1
25	A1042	3/8-16UNC x 1" LG. GR 5 ZP	8
26	A2192	3/8" I.D. SAE FLAT WASHER	10
27	A1043	3/8-16UNC x 1-1/4" LG. GR 5 ZP	4
28	00132	ENGINE SHAFT COUPLING	1
29	00134	PUMP SHAFT COUPLING	1
30	00133	COUPLING SPIDER	1
31	4604-12-12	#12 SAE x 3/4" HOSE BARB	1
32	02001	5 GPM PUMP	1
33	249-10-08	#10 MOR x #8 MP NIPPLE	1
34	02004	RELIEF VALVE	1
35	5502-08-08	1/2" STR. ELL 90 DEG FITTING	3
36	02007	RELIEF HOSE	1
37	02006	PRESSURE HOSE	1
38	5404-12-12	3/4 NPT HEX NIPPLE	1
39	00149	HYDRAULIC OIL FILTER	1
40	00150	FILTER BODY ASSEMBLY	1
41	69-12-08	3/4 x 1/5 NPT HEX NIPPLE	1
42	02012	COOLER	1
43	709T-08-08-08	#8 NPT FEMALE T	1
44	2503-10-08	1/2 MP x #10 MJIC 45 EL	1
45	02005	RETURN HOSE	1
46	281223	INSULATOR	1
47	01027	POSITIVE CABLE	1
48	02046	1/4-20 NYLOCK NUT	4
49	A2190	1/4" I.D. SAE FLAT WASHER	8
50	A1001	1/4-20 x 3/4" LG. GR 5 ZP	4
51	6805-12-12	#12 MOR x #12 FP. 90	2
52	00131	FILLER / BREATHER ASSEMBLY	1
53	00165	ENGINE SHAFT KEY	1
54	02019	HEAT SHIELD	1
55	00152	#12 HOSE CLAMP	2
56	00172	BATTERY RETAINER CLIP	1
57	06040	NYLON SPACER	4

**MATWELD, INC.**

**PHONE:(270) 444-0085**

**FAX:(270) 443-6180**

*Matweld reserves the right to change parts, features, or specifications without notice.*

**02050K 5 GPM POWER UNIT**

**GENERAL NOTES:**



**Matweld, Inc.**

FILL LEVEL

HYDRAULIC OIL

DCL-1004

**MATWELD, INC.**

**PHONE:(270) 444-0085**

**FAX:(270) 443-6180**

*Matweld reserves the right to change parts, features, or specifications without notice.*

## REVIEW OF HYDRAULIC PRINCIPLES

### A. TOOL CIRCUIT

#### 1. HYDRAULIC FORMULAS:

$$\text{GPM} = \frac{\text{CID} \times \text{RPM}}{231} \qquad \text{HP} = \frac{\text{GPM} \times \text{PSI}}{1714 (.85)}$$

Example: HP required to deliver 10 GPM at 1500 PSI.

$$\frac{10 \text{ GPM} \times 1500 \text{ PSI}}{1714 (.85)} = \frac{15000}{1456.9} = 10.3 \text{ HP}$$

(subtract back pressure for tool HP)

#### Estimated HP delivered by pump or used by tool.

<b>GPM</b>	<b>PSI</b>	<b>500</b>	<b>1,000</b>	<b>1,500</b>	<b>2,000</b>	<b>2,500</b>	<b>3,000</b>
3		1.03	2.06	3.09	4.12	5.15	6.18
5		1.72	3.43	5.15	6.86	8.58	10.30
10		3.43	6.86	10.3	13.70	17.20	20.60
15		5.15	10.30	15.40	20.60	25.70	30.90

#### 2. BACK PRESSURE

BACK PRESSURE MEASURED AT THE TOOL RETURN PORT MUST NOT EXCEED THE MANUFACTURERS BACK PRESSURE RATING. MOST MANUFACTURERS LIST THE MAXIMUM BACK PRESSURE FOR THEIR HYDRAULIC TOOLS AT 250 PSI. BACK PRESSURE MEASURED ON THE RETURN SIDE OF THE TOOL IS THE FORCE REQUIRED TO GET THE OIL BACK TO THE TANK. IN ALMOST ALL CASES THE LOWER THE BACK PRESSURE THE BETTER THE TOOL PERFORMANCE. FIRST, THE BACK PRESSURE IS SUBTRACTED FROM THE MAXIMUM TOOL PRESSURE TO ARRIVE AT A MAXIMUM TOOL OPERATING PRESSURE. FOR EXAMPLE, TOOLS WITH 2000 PSI OPERATING PRESSURE ARE INSTALLED ON A SYSTEM WITH 250 PSI BACK PRESSURE. THIS LEAVES 1750 PSI AS A MAXIMUM TOOL PRESSURE. IMAGINE A SYSTEM WITH 500 PSI BACK PRESSURE. 2000 MINUS 500 PSI BACK PRESSURE LEAVES ONLY 1500 PSI FOR THE TOOL. SECOND, TOOLS ARE DESIGNED FOR PRESSURE TO BUILD ON THE PRESSURE SIDE OF THE TOOL. IF TOO MUCH PRESSURE BUILDS ON THE RETURN SIDE, NOT ONLY IS PERFORMANCE EFFECTED, BUT SEALS MAY BLOW. THIS IS WHY IT IS VERY IMPORTANT TO DIRECT THE FLOW INTO THE TOOL CORRECTLY. REVERSING THE HOSES TO TEST MAY RESULT IN BLOWN SEALS, DAMAGE TO THE TOOL, AND PERSONAL INJURY.

## **LIMITED WARRANTY**

MATWELD, INC., PADUCAH, KY., WARRANTS TO THE ORIGINAL PURCHASE OF THIS PRODUCT THAT THE PRODUCT WILL BE FREE FROM DEFECTS IN MATERIAL AND WORKMANSHIP FOR THE PERIOD OF ONE (1) YEAR AFTER THE DELIVERY OF SUCH PRODUCT TO THE CUSTOMER. OTHER EQUIPMENT AND PARTS USED, BUT NOT MANUFACTURED BY MATWELD INC. ARE COVERED DIRECTLY BY THE WARRANTY OF THE MANUFACTURER OF THOSE PRODUCTS. PROOF OF PURCHASE MUST BE DOCUMENTED INCLUDING REFERENCE TO A SERIAL NUMBER LOCATED ON EACH TOOL. THE PURCHASER'S ONLY REMEDIES UNDER THIS LIMITED WARRANTY SHALL BE LIMITED AT MATWELD'S SOLE OPTION TO THE FOLLOWING: REPAIR, REPLACEMENT OR REFUND OF THE PURCHASE PRICE OF THE DEFECTIVE PRODUCTS. EACH OF THESE REMEDIES REQUIRES TIMELY NOTIFICATION OF THE DEFECT IN THE PRODUCT AND SUBSTANTIATION THAT THE PRODUCT HAS BEEN PROPERLY STORED, MAINTAINED AND USED. MATWELD'S OBLIGATIONS HEREUNDER EXTEND ONLY TO THE PURCHASER OF THE PRODUCT AND NOT TO ANY THIRD PARTY.

AS A CONDITION PRECEDENT TO MATWELD'S OBLIGATION HEREUNDER, THE DEFECTIVE PRODUCT MUST NOT HAVE BEEN ALTERED OR MODIFIED WITHOUT THE EXPRESS WRITTEN APPROVAL OF MATWELD, INC. THE PRODUCT MUST NOT HAVE BEEN SUBJECTED TO DELIBERATE DAMAGE, SHIPPING DAMAGE, NEGLIGENCE, TAMPERING BY UNAUTHORIZED PERSONNEL OR DAMAGE BY IMPROPER USE, STORAGE OR MAINTENANCE. SERIAL NUMBERS MUST NOT HAVE BEEN ALTERED, DEFACED OR REMOVED. SUCH ACTION VOIDS LIMITED WARRANTY.

## **EXCLUSIONS TO LIMITED WARRANTY**

*THIS LIMITED WARRANTY IS EXCLUSIVE AND IS IN LIEU OF ANY OTHER WARRANTY, WRITTEN OR ORAL, EXPRESSED OR IMPLIED, INCLUDING, WITHOUT LIMITATION, ANY IMPLIED WARRANTY OR MERCHANTABILITY OR FITNESS FOR A PARTICULAR PURPOSE.*

LIMITED WARRANTY DOES NOT COVER NORMAL WEAR AND TEAR ITEMS SUCH AS FILTERS, HOSES, COUPLERS, BITS, SOCKETS, AUGERS, AND BATTERIES.

## **LIMITATION OF LIABILITY**

EXCEPT AS PROVIDED ABOVE, MATWELD SHALL IN NO EVENT BE LIABLE OR RESPONSIBLE FOR ANY INJURY, LOSS OR DAMAGE, DIRECT, INCIDENTAL OR CONSEQUENTIAL, ARISING OUT OF THE USE OR MISUSE OR INABILITY TO USE THE PRODUCT, HOWEVER CAUSED AND ON ANY THEORY OF LIABILITY INCLUDING, WITHOUT LIMITATIONS, BREACH OF CONTRACT, TORT, (INCLUDING NEGLIGENCE OR STREET LIABILITY) AND NOT WITHSTANDING ANY FAILURE OF ANY REMEDY HEREIN OF ITS ESSENTIAL PURPOSE, EVEN IF MATWELD WAS AWARE OF THIS POSSIBILITY OF SUCH DAMAGE. MATWELD'S LIMITED WARRANTY AS SET FORTH ABOVE SHALL NOT BE ENLARGED, DIMINISHED OR AFFECTED BY, AND NO OBLIGATION OR LIABILITY SHALL ARISE OR GO OUT OF THE RENDERING OF TECHNICAL ADVICE OR SERVICE BY MATWELD OR ITS AGENTS. THE FOREGOING MAY NOT BE CHANGED EXCEPT BY WRITTEN AGREEMENT SIGNED BY AN AUTHORIZED OFFICER OF MATWELD, THE REMEDIES SET FORTH HEREIN ARE EXCLUSIVE.

# 18. CUSTOMER INFORMATION

Name \_\_\_\_\_

Company \_\_\_\_\_

Serial # of your Matweld tool \_\_\_\_\_

( Upon receiving your Matweld tool, make sure to list serial number above so that a good record is kept for order information.)

## MATWELD HYDRAULIC TOOL LIST

All Matweld Hydraulic Tools operate at  
5 or 10 GPM @ 2000 PSI

### POWER UNITS:

07000 – HYDRA POWERED MODULAR SYSTEM  
02900A – DIESEL POWER UNIT  
00100K – DUAL CIRCUIT POWER UNIT  
02050 – GASOLINE 1-5 GPM  
05500 – TWIN POWER DUAL CIRCUIT UNIT 1-10 GPM OR 2-5 GPM & 5000 WATT GENERATOR  
03700A – ELECTRIC POWER UNIT  
09800 - TRACK ROVER

### TRACK TOOLS:

01600A – 5 GPM 1" IMPACT WRENCH  
02500 - 10 GPM 1" IMPACT WRENCH  
04500D – ½" IMPACT DRILL  
00800A – 16" RAIL SAW  
03900A – REVERSING RAIL SAW  
01100 A– SPIKE PULLER  
08200– TIE TAMPER  
08300– SPIKE DRIVER  
01500 – RAIL DRILL  
01000 – CHAIN SAW  
03500 – SELF FEED RAIL DRILL  
03100C - RAIL PULLER  
02800 - BRIDGE SPREADER  
05000- HAND PUMP WELD SHEAR  
05100A - POWER WELD SHEAR  
06600 - POWER UNIT TRANSPORT CART  
07500 - CHAMFER TOOL

### GRINDERS:

04600 & 04650– STRAIGHT STONE CW & TRIGGER VERSION  
04700 & 04750 – STRAIGHT STONE CCW & TRIGGER VERSION  
00600 & 00600C - 8" CUPSTONE GRINDER  
04800 & 04850 – CUPSTONE & TRIGGER VERSION  
00700 – RAIL SURFACING GUIDE  
02400 – 10" OR 14" FROG AND SWITCH GRINDER  
05900 – FROG/PROFILE GRINDER – ON/OFF FLOW CONTROL  
05950 – FROG/PROFILE GRINDER – SAFETY TRIGGER  
06000 – PROFILE GRINDER  
05400 – ANGLE GRINDER  
05600 – BULL NOSE GRINDER  
06950 & 06950A - MULTI-PURPOSE GRINDER

### OTHER PRODUCTS:

HYDRAULIC MANIFOLDS  
HYDRAULIC TEST GAUGES  
HOSE REELS  
HYDRAULIC HOSES  
ACCESSORIES

**MATWELD, INC.**

**PHONE:(270) 444-0085**

**FAX:(270) 443-6180**

*Matweld reserves the right to change parts, features, or specifications without notice.*